

Raymore-Peculiar School District



Online Course Student/Parent Handbook

Table of Contents

Introduction/Senate Bill 603	2
What is MoCAP? What is Launch?	2
Why Consider Online Learning?	3
Profile of a Successful Online Student	3
Making the Decision	4
Enrollment Procedures	5
Homeschool Students	6
Scheduling Procedures	6
Academic Information	7
Dropping a Course	7
No Show Procedure	8
Getting Started	8
Navigating Canvas	9
Plagiarism/Academic Dishonesty	10
Progress Monitoring	10
State Testing	10
Graduation Requirements/Early Graduation	11
Senior Information	11
A+ Program	11
IEP/504 Students	12
School Athletics and Activities	12
Summer School	13
Technology	13
Final Advice to Parents	13
Contact Numbers/Email	14
High School Course Offerings	15
Online Learning Agreement	20
Appendices	
Online Course Enrollment Appeal Process	22
Online Learning Readiness Rubric	23

Introduction

This guide has been prepared for parents, guardians, counselors and others who want to help students first decide whether online courses are a good option for them and, if so, how to proceed. In the pages that follow, you will find information about:

- ❖ the characteristics of a successful online learner,
- ❖ how to enroll in online courses and,
- ❖ the impact coursework may have on academics and activities.

Senate Bill 603 At a Glance

In the spring of 2018, SB 603 was passed, thereby expanding the online learning opportunities for students in Missouri. Highlights of this legislation are below.

- The school district must adopt a policy that creates a process for students to enroll in virtual courses and may include consulting with a school counselor.
- The school district must pay for eligible K-12 students to take virtual courses as long as the student: one, resides in the district; two, is currently enrolled in the district and, three, was enrolled full-time in a public school the previous semester. **Exceptions for homeschool students who reside in the district is referenced below in the 'homeschool student's section of this document.
- School districts are not required to pay for courses beyond full-time enrollment. Therefore, if a student is already enrolled in seven courses in a semester during the regular year (or two courses during the summer school session), the district will not be required to pay for additional courses.
- School districts are able to determine a student's eligibility to enroll in an online course and can refuse enrollment based on 'the best educational interest of the child'. Should the parent disagree with the district's determine, an appeal may be made to the local school board.

What is MoCAP? What is Launch?

Missouri Course Access and Virtual School Program (MOCAP) was established in 2007 as the state's online school. It was previously known as Missouri Virtual Instruction Program (MOVIP). Currently, MOCAP offers courses to grades K-12. Students can take courses from any Internet-connected computer, available 24-hours a day, seven days a week. MOCAP's mission is to offer Missouri students equal access to a wide range of high quality courses, and interactive online learning that is neither time nor place dependent.

Local school districts and charter schools may use their own preferred online provider. The Raymore-Peculiar School District's preferred provider is Launch. Launch is operated and overseen by the Springfield, MO School District and current offers over 120 courses. Courses are designed by Missouri teachers and aligned to the state standards. A formal review process is built into all course development to ensure high quality and rigor. Students wishing to take advantage of online

learning opportunities will do so through Launch. All information/procedures that follow in this document are in reference to Launch.

If a student wishes to pursue an online class offering through other MoCAP options outside of Launch, he/she will need to contact the counselor/admin to begin the appeal process. More specifics on that process are at the end of this document.

Current course offerings through Launch can be found at: <https://fueledbylaunch.com/courses/>

Why Consider Online Learning?

Students take online courses for a variety of reasons. For some students, it expands the range of courses and opportunities, particularly if a student cannot access a face-to-face course due to scheduling conflicts. For others, it allows students to take courses not offered at the local level. Other students may use online course opportunities for credit recovery or as a viable homebound option. And, still others may simply prefer the online learning format.

From a student's point of view, online learning may be attractive because it is:

- ❖ Personalized to individual needs and learning goals.
- ❖ Flexible so a student can try different ways to learn.
- ❖ Interactive and engaging because students will be meeting people from other school districts in a safe, monitored environment.
- ❖ Relevant to the online life many students lead.
- ❖ Paced by individual progress so students can move as fast or as slow as needed in order to attain learning goals.
- ❖ Collaborative with faculty, peers and others.
- ❖ Responsive and supportive when a student needs extra help or time to learn.
- ❖ Available to all students 24 hours a day.

Profile of a Successful Online Student

The most important question to answer is whether or not the student is well suited to be in an online learning environment. Parents and students should be aware that the demands of online courses are equal to or exceed those of traditional 'face to face' courses. Online instruction places much more responsibility on the student. A student should plan to spend at least one hour a day, five days a week, on each course. In other words, at least five hours per week on each course. This is similar to the amount of time a student would spend in a course at the local "brick and mortar" school. Instructors with online teaching experience agree that students who are successful at online learning have the following critical characteristics:

❖ **Good Time Management**

Can the student create and maintain a study schedule throughout the semester without the face-to-face interaction with a teacher?

❖ **Effective Communication**

Can the student ask for help, make contact with other students and/or instructors online and describe any problem he/she is having with the learning materials using email?

❖ **Independent Study Habits**

Can the student study and complete assignments without direct supervision and Maintain the self discipline necessary to stick to a schedule?

❖ **Self-Motivation**

Does the student have a strong desire to learn skills, acquire knowledge and fulfill assignments in online courses because of their educational goals?

❖ **Academic Readiness**

Does the student have the basic reading, writing, math and computer literacy skills to succeed in an online course?

❖ **Technologically Prepared**

Does the student know how to open, create and/or save a document, use various technology tools and identify file formats (e.g., doc, xls, pdf, jpg)?

The Stanford Research Institute examined the accessibility of online learning for students, especially those who were at risk of failure. Their report cautions that students who have failed face-to-face classes may have challenges that will affect their success in an online course as well. Many students do not realize that they will have to be even more accountable for their time, performance and productivity in an online class.

Making the Decision

In this process, a crucial role of the parent is to help the student decide if online learning is the most effective way for him/her to learn. Using the profile in the previous section is a starting point for making this determination. Once a parent decides if a student is likely to be successful, there are other questions to consider.

Technology

- What are the technical requirements for the courses the student wants/needs to take?
- Can the parent/guardian provide the internet access that the student needs?
- How technologically savvy are the parents/students?

Learning Environment

- Is there a quiet area in the home in which the student can work on the online course or does the student have easy access to a facility that provides this form of environment (such as the public library)?
- Will there be a regular, designated time of day in which the student will work on the course(s)?
- Is the student willing and able to ask for help when needed?

Considering the Course

- Does the course meet academic/graduation requirements?
- Has the course been approved for credit by the school?
- Are there prerequisites for the online courses? Has the student met these requirements?
- Does the course meet NCAA Eligibility Requirements for potential Division I and II student athletes?
- How rigid are the course assignment/test dates?
- What is the time commitment (daily and length of term)?
- How do students/parents receive grade updates and the final grades?
- When can a student drop the course if he/she finds it too difficult?

Enrollment Procedures

In order to enroll in an online course under the provisions of Senate Bill 603, students must be a resident of the Raymore-Peculiar School District and be willing to enroll in the district.

Upon determining that online learning may be a viable option for a student, parents should contact the school counselor to pursue possible enrollment. A meeting will be scheduled with the student's counselor and administrator and student eligibility will be determined. The school district may deny a student/parent request to enroll in an online course at district cost if one or more of the following is true:

- The student has previously gained the credits provided from the completion of the online course.
- The online course is not capable of generating academic credit.
- The online course is inconsistent with the remaining graduation requirements of the student.
- The student has not completed the prerequisite coursework for the requested online course.
- The student has failed a previous online course(s).
- The course enrollment request does not occur within the same timeliness established by Launch and/or the school district.

Should a student meet the eligibility expectations and the course requests are aligned to graduation requirements, he/she will be enrolled in the Launch courses agreed upon.

****If a student receives a passing grade in a course but wishes to retake it in hopes of attaining a higher grade, the district will not pay for the retake. For example, if a student receives a 'D' in algebra 1 and wants to retake it for a higher grade, the district will not pay for the retake online course. However, if the parent wishes to pay for the retake and receives a higher grade, the district will accept the grade but not for additional credit (a student can only receive credit for algebra 1 once).**

****If a family works directly with Launch and not through our district counselors to enroll in a Launch class the family will be responsible for the cost of the course(s) in which they enroll their student(s). In addition, Raymore Peculiar School District may not accept the credit from these courses.**

Homeschool Students

If a student who resides in the Raymore-Peculiar School District was homeschooled the prior semester and wishes to take online courses at the district's expense, there are allowances for this. The following criteria must be met:

- The student resides in the district (and provides proof of residency)
- The student must enroll in Launch courses only
- The student must meet all of the Launch expectations (regarding prerequisites, etc.)
- The student may only enroll in a total of seven courses a semester during the school year or two courses during the summer semester (but may enroll in less than seven)

Scheduling Procedures

If a student has a 'mixed schedule', meaning a schedule that includes both face-to-face and online courses, he/she may be required to stay on campus while working on the online course, depending upon when the online course work is occurring. This will be at the determination of the building administrator. For example, a student who wishes to come to face-to-face courses at RPHS during the first half of the day and then take online courses for the entire afternoon would not be required to stay on campus. Likewise for a student who used the first half of their day for online coursework but then came in the afternoon for face-to-face courses. Students in these situations are responsible for their own transportation; the district will not provide transportation.

However, if a student wanted to enroll in face-to-face courses for the first three periods of the day, then do an online course in the middle of the day (fourth period) and again take face-to-face courses towards the end of the day (fifth, sixth and seventh), he/she would be expected to stay on campus at an assigned location for those middle of the day online courses. If a student is taking two or fewer online courses in the middle of the day, the student will be expected to stay on campus.

Academic Information

Launch offers various types of online coursework. All coursework is aligned to the Missouri State Standards. Content is reviewed annually to ensure updated resources as well as access to high-quality digital resources.

❖ Traditional Virtual

- Designed for students earning first-time credit
- Students earn a letter grade and percentage
- Starts and stops with the traditional calendar; has set due dates
- NCAA and MSHSAA approved
- Course can be taken over a quarter or semester
- Requires a proctored final exam conducted via web conferencing
- Curriculum built in a project-based learning format to include individual and group work delivered via individual assignments, culminating events, group discussions, etc.

❖ Credit Recovery

- Designed for students who have previously failed the course
- Starts at any point; no due dates
- MSHSAA approved
- Curriculum built to priority standards and assessed at 80% mastery
- Students earn a pass or no grade
- Students start at 0% and work their way to 100% completion

By utilizing the Canvas Learning Management System Mastery Paths Platform, instruction can be personalized to meet the needs of individual students. Students can accelerate through content due to prior knowledge or can be provided additional assistance or remediation as needed.

Dropping a course, regular school year

Traditional Virtual, regular school year: Students have 20 school days from the start date to drop a semester course without grade penalty and 10 school days for a quarter course. Snow days would not factor into this count.**

Credit Recovery, regular school year: Students have 20 school days from enrollment to drop the course without penalty. Snow days would not factor into this count.**

**If a student starts the semester in a virtual course but drops it before 10 days, he/she may request a transfer to a corresponding face-to-face course if space allows. If a student starts the semester in a virtual course, does none of the coursework by day 10 and then drops the course

after 10 days, he/she will not be enrolled in a corresponding face-to-face course. However, if a student begins the virtual course, does complete some of the work and then decides to drop the course before 20 school days have passed, his/her current grade may be transferred to a corresponding face-to-face course if space allows.

**If a student wishes to drop a face-to-face course, he/she must do so within 10 school days and must enroll in an equivalent online course. The online course will be offered in the same time period as the face-to-face course (i.e., if the student is dropping a 2nd hour course then the student will be expected to work on his/her online course during 2nd hour and, if he/she has a 1st hour, will be expected to stay on campus for this work). A student's schedule will not be rearranged to 'fit' the online course into a more convenient time slot.

Dropping a course, summer school

Traditional Virtual, summer school: Students have 2 school days from the start date to drop a summer school course.

Credit Recovery, summer school: Students have 2 school days from the start date to drop a summer school course.

No-Show Procedure

Students will be dropped from courses if they fail to log in for 20 consecutive days.

In an effort to maintain accurate attendance records for online courses, the following no-show procedure will be implemented for all students participating in Launch. Students are considered a "no-show" if they do not log into their Launch course for the specified times outlined in the policy. Student login is monitored by the Launch office weekly.

- A student is considered a "no-show" if he or she has not logged into and participated in their course prior to the stated course drop date. Students will be dropped with zero days of attendance reported with counselor or liaison being notified at least 2 school days prior.
- After the drop date, a student can be dropped and is considered a "no-show" if he or she has not logged into and participated in his or her Launch course for 20 consecutive calendar days. The last date of attendance will be reported as his or her last date of login and participation. Counselors or district liaisons will receive notice of potential drop at calendar day 15 of no consecutive login and participation. If the student's last date of attendance is after the stated course drop date, the student will receive an F for the course in addition to being dropped.
- For students participating in Launch credit recovery, they must login and participate in at least one credit recovery course or the no-show policy will apply with the last date of login reported as their last date of attendance.

Getting Started

Prior to Day 1

- Your building counselor will provide you with an enrollment notification; it includes your login information and course list.
- Make sure your chromebook is charged and ready to go.

Day 1

- All Launch courses are offered through Canvas. Learn how to check your Canvas inbox.
- Watch the introduction announcement for your course.
- Complete at least one assignment to ensure you know the process.

Day-to-Day

- Start everyday by checking your Canvas inbox.
- Look at any recent feedback given from your teacher.
- Check the calendar for due dates each day.
- Keep working on the next assignments in your module.

Additional Support

- Communication through Inbox: Students can message teachers through the inbox feature in Canvas. Teachers may use this to reach the student as well. Typical response time is 24 hours.
- Announcements: Video announcements are posted weekly on the course homepage and provide information for the week including the teacher's office hours.
- Conferencing: On a weekly basis, teachers host a one hour video conference. This is a time for students to chat face-to-face with teachers and receive immediate feedback from teachers.
- Parent/Guardian Feedback: Teachers will make weekly contact with parents if a student is inactive or failing.

Navigating Canvas

Announcements: Launch teachers will post a video announcement every week. Students need to be sure to watch these for important information regarding the course.

Feedback: Teachers provide feedback via rubrics and comments. Students should be reading this feedback in order to enhance their performance in the course. Also, students should feel free to respond to the feedback the teacher provides.

Instructor Information: Instructor information is provided at the bottom of the course page.

To Do: This is where the student will find a list of assignments and due dates. The list is found on the course homepage and will also lead the student to videos, discussion boards and other assignment items as needed. The calendar tab also provides a list of due dates.

Grades: The grades tab allows the student to see current progress in the Launch course and see the teacher's feedback comments.

Syllabus: This link provides the syllabus for the course. It outlines the course's major topics and units of study.

Google Drive: Students will use Google Drive to create many of the assignments and submit Google files to Canvas.

Plagiarism/Academic Dishonesty

Using someone else's work and claiming it as your own, even if it is unintentional, is plagiarism. It is important that students cite sources and use quotation marks appropriately to avoid plagiarism. Launch has a specific plagiarism policy and list of consequences. These same consequences can be invoked for cheating and/or forging/falsifying documents.

- 1st offense: Student will be allowed to redo assignment for full credit and a formal warning will be issued.
- 2nd offense: Student will be allowed to redo the assignment for half credit and a second formal warning will be issued.
- 3rd offense: Student will receive a zero for the assignment and be referred to the Launch principal for possible additional consequences.

Progress Monitoring

Parents are given parent observer accounts to monitor progress of their students.

District employees (when given permission) can monitor student progress using Dropout Detective.

State Testing

All MOCAP and/or Launch students are required to participate in the Missouri Assessment Program (MAP) and End of Course (EOC) testing when appropriate. MAP and EOC tests measure a students' progress toward mastery of the Show-Me Standards, which are the educational standards in Missouri. All testing is conducted at the local school site in which the student resides.

- **MAP:** All students in grades three through eight in Missouri will take the MAP test in communication arts and math. Students in grades five and eight will also take the MAP test in science.
- **EOC:** End-of-Course assessments are taken when a student has received instruction on the course-level expectations for an assessment, regardless of grade level (but typically in high school). EOC tests are required in the subject areas of algebra I, biology, English II and government.

Graduation Requirements

To earn a Raymore-Peculiar School District diploma, students need to successfully complete the 26 credit requirements defined in the Career and Educational Planning Guide, page 6. Students and parents need to work closely with the school counselor to make sure they are on track to graduate.

Early graduation

According to school district policy 2540, early graduation is allowed any time after six semesters of attendance, beginning with grade nine and attainment of graduation requirements. Early graduation should be a part of the cooperative plan arrived at by students, their parent/guardian and the school. All early graduations must be approved by the Board of Education.

Class Rank

All online course grades through Launch will be calculated into a student's class rank equivalent to a course taken face-to-face at RPHS. For example, an AP course taken through Launch will receive the same weight as an AP course taken face-to-face as long as the student takes the AP exam in May.

Senior Information

The senior year is a busy time for students and families and there are a host of deadlines involved in end of the year activities and graduation. Daily announcements are made at school and regular grade level newsletters are shared with families. It is the responsibility of the student and his/her parent/guardian to keep up-to-date on senior deadlines and expectations. Specific questions can be sent to the Senior Office at 892-1414.

A+ Program

Students who are enrolled in the A+ program and take virtual courses will have their attendance recorded as 95%, thereby allowing them to meet the A+ program attendance requirements. Students enrolled in face-to-face coursework will have the attendance recorded based on actual seat time. Regardless of whether a student is enrolled in virtual or face-to-face coursework, all A+ program expectations apply. These included:

- Being a U.S. citizen or permanent resident;
- Entering into a written agreement with RPHS expressing the desire to be a part of the A+ program;
- Graduate with a 2.5 (or above) unweighted grade point average;
- Attend an A+ designated school for 3 years prior to graduation (being enrolled in RPHS and taking Launch virtual classes would apply in this situation);

- Have a 95% attendance record for grades 9-12;
- Perform at least 50 hours of unpaid tutoring or mentoring (must be approved by A+ coordinator prior to engaging in the activity);
- Maintain good citizenship; and
- Achieve a score of proficient or advanced on the Algebra I end of course (EOC) exam or higher level DESE approved end of course (EOC) exam in mathematics.

IEP/504 Students

Launch instructors are trained in accommodating students' needs. The school's process coordinator will email your student's IEP or 504 to Launch so that it can be distributed to the student's teachers. Accommodations will be made accordingly.

School Athletics and Activities

Students that desire eligibility to participate in activities or sports at a Raymore-Peculiar school must meet the requirements set forth in Section 2 of the MSHSAA Handbook, entitled *Student Essential By-Laws*. A student who is already enrolled in the RayPec School District and enrolls in online classes through the Raymore-Peculiar School District Launch program may meet eligibility requirements outlined in By-Law 2.3.2 through meeting ALL of the following:

1. The student is an enrolled student of the public middle/high school of residence, as defined in By-Law 3.10, and is taking a minimum of six credit-bearing, seat-time or Launch classes for a minimum of 3.0 units of credit at the school.
2. All classes/assignments must be completed by the high school/middle school's close of the semester, as per By-Law 2.3.11, in order for those classes/credits to be considered toward activity eligibility.
3. To be eligible in the following semester, students must earn a minimum of 3 full credits the semester prior.

Home school students may participate in athletics/activities if they enroll in a minimum of two credit bearing seat time or online classes. All classes must be completed by the end of the semester. To be eligible the following semester, students must earn a minimum of 3 full credits the semester prior and have passed the two Launch classes.

Parents are strongly encouraged to review the [MSHSAA handbook](#) for further clarification regarding eligibility. For specific questions, please contact the Raymore-Peculiar Activity Director at 892-1410.

Summer School

Students may also take up to three online courses during the summer term (two in June and one in July or one in June and two in July). Expectations and requirements remain the same as the regular school year for summer courses. Enrollment in courses must be done through the student's counselor. It should be noted that students may only enroll in a maximum of three courses during the summer term at the district's expense.

****If a family works directly with Launch and not through our district counselors to enroll in a Launch class the family will be responsible for the cost of the course(s) in which they enroll their student(s). In addition, Raymore Peculiar School District may not accept the credit from these courses.**

Ray-Pec Summer School Contact Support: Jason Waltz: Jason.Waltz@raypec.org

Technology

Any full-time student will be issued a chromebook through the district. The chromebook will meet the technology requirements for any online course taken through Launch. The district, however, will not provide internet access; this is the responsibility of the parents/guardians. All Launch courses are hosted by Canvas, an Interactive Learning Management System currently used at the high school level in the Ray-Pec School District.

Students are provided with HELP Desk Support through Launch, available from 7:30 a.m. to 9:00 p.m., 7 days a week. There are three ways to access help:

1. Send an email to support@fueledbylaunch.com (typical response is within 30 minutes)
2. Use your Canvas inbox to send a message to HELP.
3. Call the Launch office at 417-523-0417. The office is only open from 7:30-4:00 Monday through Friday.

Final Advice for Parents

Throughout the student's enrollment in the online course, it is best practice to do the following:

- Set up a study space, including technology required.
- Be prepared for any technical issues that may come up.
- Review the syllabus with your student.
- Define expectations for when and where your student will work on the course.
- Agree on incentives and consequences.
- Reinforce that online courses are as important as face-to-face courses and do become a part of the educational record.
- See that your student establishes a routine for working on his/her online course.
- Help your student maintain a regular study schedule.
- Monitor your student's progress.

Contacts

The first point of contact for these opportunities will be your student's school counselor.

East Middle School

Larry King	larry.king@raypec.org	816-388-4007
Brenda Mackender	brenda.mackender@raypec.org	816-388-4008

South Middle School

Mary Schneider	mary.schneider@raypec.org	816-892-1508
Piper Showen	piper.showen@raypec.org	816-892-1509

RPHS

Laurie Cantrell	laurie.cantrell@raypec.org	816-892-1436
Cheryl Gray	cheryl.gray@raypec.org	816-892-1435
Nicole Ingram	nigole.ingram@raypec.org	816-892-1437
Eric Sclesky	eric.sclesky@raypec.org	816-892-1419
Bethany Sylvester	bethany.sylvester@raypec.org	816-892-1421

RPA

Caitlin Fackler	caitlin.fackler@raypec.org	816-892-1810
-----------------	--	--------------

Summer School

Jason Waltz:	Jason.Waltz@raypec.org	
--------------	--	--

Additional questions beyond what the school counselor may be able to answer should be directed to the Director of Secondary Education:

Kristel Barr	kristel.barr@raypec.org	816-892-1345
--------------	--	--------------

High School Course Offerings

English Language Arts

Course	Type of Course	Credit	Type of Credit
Contemporary Lit	Regular, Honors	1.0	Elective
Creative Wtg. 1	Regular	.5	Elective
Creative Wtg. 2	Regular	.5	Elective
English 1	Regular, Honors, Credit Recovery	1.0	ELA Required
English II	Regular, Honors, Credit Recovery	1.0	ELA Required
English III	Regular, Honors, Credit Recovery	1.0	ELA Required
English IV	Regular, Credit Recovery	1.0	ELA Required
Film as Literature I*	Regular	.5	Elective
Film as Literature II*	Regular	.5	Elective
Grammar & Comp I (Summer 2019)	Regular	.5	Elective
Grammar & Comp II (Summer 2019)	Regular	.5	Elective
Introductory Speech	Regular	1.0	Elective
Reading	Regular	1.0	Elective

Mathematics

Course	Type of Course	Credit	Type of Credit
Algebra I	Regular, Credit Recovery	1.0	Math Required
Algebra II	Regular, Honors, Credit Recovery	1.0	Math Required
Foundations of Algebra*	Regular, Credit Recovery	1.0	Elective

Geometry	Regular, Honors	1.0	Math Required
Intro to Computer Science	Regular	.5	Elective
Pre Calc/Trig	Regular	1.0	Math Required/Elective
Professional Math*	Regular, Credit Recovery	1.0	Math Elective

Science

Course	Type of Course	Credit	Type of Credit
Astronomy	Regular	1.0	Science Required/Elective
Chemistry	Regular, Honors, Credit Recovery	1.0	Science Required/Elective
Earth Science	Regular, Honors, Credit Recovery	1.0	Science Required/Elective
General Biology	Regular, Honors, Credit Recovery	1.0	Science Required/Elective
Introductory Biology*	Regular, Credit Recovery	1.0	Elective
Introductory Chemistry*	Regular, Credit Recovery	1.0	Elective
Physical Science (Fall 2019)	Regular	1.0	Science Required/Elective

Social Studies

Course	Type of Course	Credit	Type of Credit
American Civil War	Regular	.5	Elective
Economics (Summer 2019)	Regular	.5	Elective
Liberty & Law (Gov't.)	Regular, Honors, Credit Recovery	.5	SS Required (.5 of RP Gov't requirement)
Psychology	Regular, Credit	.5	Elective

	Recovery		
Psychology of the Holocaust	Regular	1.0	Elective
Sociology (Fall 2019)	Regular	.5	Elective
U.S. History	Regular, Honors, Credit Recovery	1.0	SS Required
World Geography	Regular, Credit Recovery	.5	Elective
World History	Regular, Honors, Credit Recovery	1.0	SS Required

Fine Arts

Course	Type of Course	Credit	Type of Credit
Fine Arts Apprec. I*	Regular	.5	Fine Arts
Fine Arts Apprec. II*	Regular	.5	Fine Arts
Music Theory	Regular	1.0	Fine Arts

Health/PE

Course	Type of Course	Credit	Type of Credit
Health	Regular, Credit Recovery	.5	Health Required
PE I	Regular	.5	PE Required
Physical Fitness	Regular	.5	PE Required

Practical Arts

Course	Type of Course	Credit	Type of Credit
Computer App	Regular	.5	Practical Art
Digital Communications	Regular, Credit Recovery	.5	Practical Art
Early Childhood (Summer 2019)	Regular	.5	Practical Art
Financial Accounting	Regular	1.0	Practical Art

Personal Finance	Regular, Credit Recovery, Dual Credit	.5	Required Personal Finance
Web Design	Regular	.5	Practical Art

World Languages

Course	Type of Course	Credit	Type of Credit
French I	Regular	1.0	Elective
French II	Regular	1.0	Elective
Japanese I	Regular	1.0	Elective
Japanese II	Regular	1.0	Elective
Spanish I	Regular	1.0	Elective
Spanish II	Regular	1.0	Elective

Other Electives

Course	Type of Course	Credit	Type of Credit
ACT Prep	Regular	.5	Elective
Driver's Ed	Regular	.5	Elective
Employment Internship	Regular	.5	Elective
FACS Internship	Regular	.5	Elective
Hunter/Boater Safety (Summer only)	Regular	.5	Elective

Advanced Placement

Course	Type of Course	Credit	Type of Credit
AP Calculus AB	AP	1.0	Math Elective
AP Computer Science	AP	1.0	Practical Arts
AP English Lit & Comp	AP, Dual Credit	1.0	ELA Required

AP Statistics	AP	1.0	Math Elective
AP Physics	AP, Dual Credit	1.0	Science Elective
AP U.S. History	AP, Dual Credit	1.0	SS Required
AP U.S. Gov't.	AP, Dual Credit	1.0	SS Required

*Course is not NCAA eligible.

**For Middle School Course Catalog, please go to: <https://fueledbylaunch.com/courses/>

Raymore Peculiar School District Online Learning Agreement

Please complete the information below as a part of the enrollment process.

School: _____

Student MOSIS Number: _____

Student Name (First, Middle, Last): _____

Gender: _____ Birthdate (mm/dd/yyyy): _____

Race: _____ Grade Level: _____

Student Email: _____

Does student have an IEP (circle one)? Yes No

Does student have a 504 (circle one)? Yes No

Parent/Guardian Name(First, Last): _____

Parent/Guardian Phone Number(444-444-4444): (_____) _____ - _____

Parent/Guardian Email: _____

Parent/Guardian Address: _____

Online Handbook Agreement

The Online Course Parent/Student Handbook is a vital part of our program. Though the handbook does not contain every specific rule or regulation concerning the program, it does have all major policies and general information to help students and their parents better understand this unique program. Please read the handbook carefully.

We have received and reviewed the Online Course Parent/Student Handbook and understand that it is our responsibility to follow all of the expectations set forth within the handbook.

Please list the online courses in which the student wishes to enroll:

- 1) _____
- 2) _____
- 3) _____
- 4) _____
- 5) _____
- 6) _____
- 7) _____

Student Signature

Date

Student Name (Printed)

Parent Signature

Date

Parent Name (Printed)

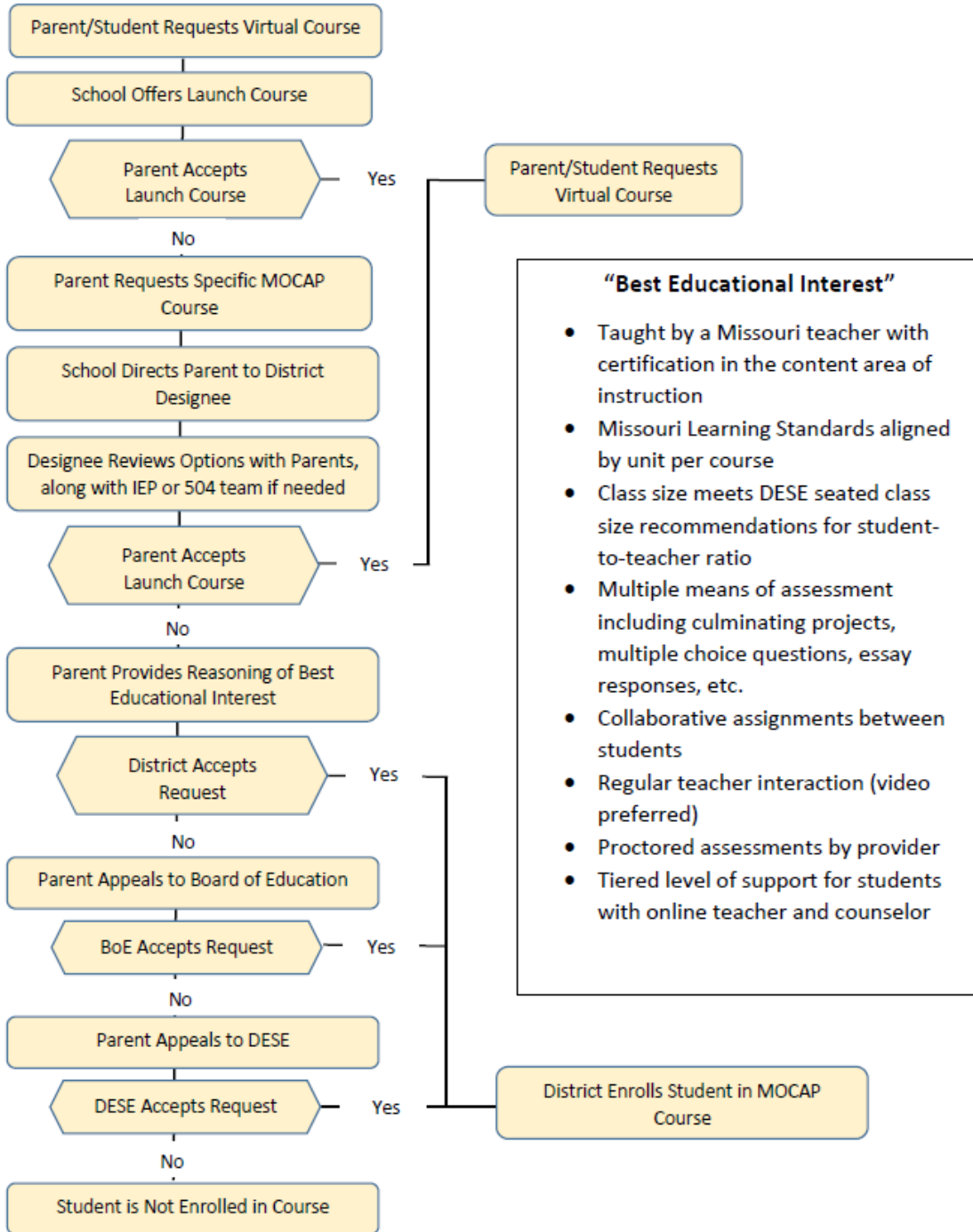
**** If a student wishes to enroll in more than 3 LAUNCH courses in a semester and the student has not already demonstrated previous success with LAUNCH courses (passing 4 or more courses in a previous semester), then a meeting with the principal and the student's counselor may be required before the enrollment can be approved.***

APPROVAL SIGNATURE:

Principal Signature

Date

RPSD Online Course Enrollment Process



Online Learner Readiness Rubric

Name _____

Developed by
 MICHIGAN VIRTUAL

Student Readiness	Technology Skills	Work & Study Habits	Learning Style	Technology/Connectivity	Time Management	Interest/Motivation	Reading/Writing Skills	Support Services
★	Student has little experience using a computer or the Internet, and has minimal desire to develop more skills in this area. <input type="radio"/>	Student often needs reminders to complete routine assignments, often turns homework in late and is not able to spend 5-10 hours per week on each online course. <input type="radio"/>	Student is not a self-directed learner and often requires real-time feedback from teachers regarding basic directions and follow-up support. <input type="radio"/>	Student does not have consistent access to a computer and a reliable connection to the Internet at home or at school. <input type="radio"/>	Student is beginning to demonstrate effective time management skills in doing research, basic studies and preparing for tests or quizzes. <input type="radio"/>	Student has little or no interest in the content area of the online course offering and has a negative or unrealistic attitude toward online learning. <input type="radio"/>	Student is reading at below grade level and has experienced difficulty with routine writing assignments. <input type="radio"/>	In general, parents and school personnel do not actively support online learning and are unable or unwilling to provide support assistance. <input type="radio"/>
★★	Student has limited experience using a computer and the Internet, and has expressed a strong interest in developing more skills in this area. <input type="radio"/>	Student sometimes needs reminders and assistance in completing routine assignments and has pledged to spend 5-10 hours per week on each online course enrollment. <input type="radio"/>	Student beginning to demonstrate a behavior of self-directed learning and sometimes requires real-time feedback from teachers regarding basic directions and follow up support. <input type="radio"/>	Student has limited access to a computer with low-speed Internet service at school or at home. <input type="radio"/>	Student is beginning to demonstrate effective time management skills in doing research, basic studies and preparing for tests or quizzes. <input type="radio"/>	Student has an interest in the content area of the online course offering, but has expressed concerns about enrolling in an online course or has an unrealistic attitude toward online learning. <input type="radio"/>	Student is reading at grade level and has demonstrated limited proficiency with writing assignments. <input type="radio"/>	Student support system is limited, parents and school personnel are somewhat supportive of enrollment in online courses. <input type="radio"/>
★★★	Student has strong computer skills and more than adequate experience using a word processor, email application and web browser. <input type="radio"/>	Student rarely needs reminders or assistance in completing routine assignments and has demonstrated good independent study habits. <input type="radio"/>	In general, the student is self-directed and does not require real-time feedback from teachers regarding basic directions and follow-up support. <input type="radio"/>	Student has consistent access to a computer with moderate-speed Internet service at home or at school. <input type="radio"/>	Student has demonstrated effective time management skills in doing research, basic studies and preparing for tests or quizzes. <input type="radio"/>	Student has an interest in the content area of the online course offering, and has a positive and realistic attitude toward online learning. <input type="radio"/>	Student is reading at or above grade level and has demonstrated success with a variety of writing assignments. <input type="radio"/>	Student has open access to school-based mentoring/counseling service and parental support. <input type="radio"/>
★★★★	Student has excellent computer skills and significant experience using a word processor, email application and web browser, and is comfortable downloading information from the Internet and using other technology tools and applications. <input type="radio"/>	Student does not need reminders or assistance in completing routine assignments, usually finishes homework ahead of time and has successfully completed an independent study experience or taken an online course. <input type="radio"/>	Student is a self-directed learner and demonstrates a high level of comfort and skill in learning new material without requiring real-time feedback from teachers regarding basic directions and follow-up support, and deals well with ambiguity. <input type="radio"/>	Student has daily access to a computer with high-speed Internet service at home and at a convenient location in the school building before, during and after regular school hours. <input type="radio"/>	Student has demonstrated outstanding time management skills while participating in a variety of clubs, student organizations, sports and work activities. <input type="radio"/>	Student has a strong interest in the content area of the online course offering, is highly motivated to enroll in an online course and has a positive and realistic attitude toward online learning. <input type="radio"/>	Student is reading above grade level, has strong reading comprehension skills and has demonstrated success with complex writing assignments. <input type="radio"/>	Student has regularly scheduled access to school-based mentoring/counseling services, parental support is strong and district has adopted policies and identified best practices to support students as online learners. <input type="radio"/>
Comments:	Comments:	Comments:	Comments:	Comments:	Comments:	Comments:	Comments:	Comments:

Note: This rubric was not designed to be used as a tool to determine eligibility for enrollment in online courses, but instead to be used as a resource to help identify specific areas where students may need additional support to better ensure success.