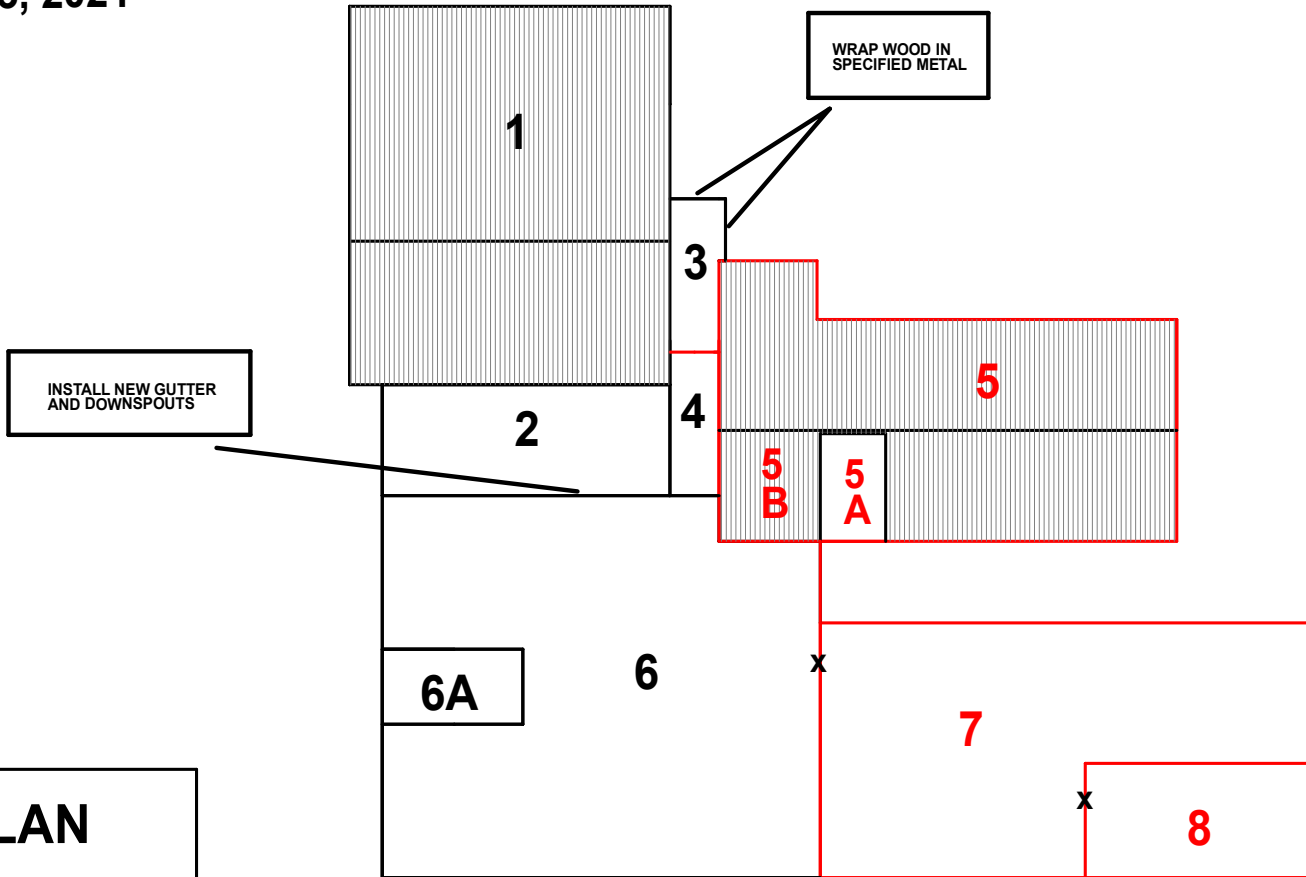


REVISED
AUGUST 23, 2021



REVISION	NO.	DATE	BY

NOTES:

AREAS 5, 5A, 5B, 7, 8

INSTALL SPECIFIED RESURFACING SYSTEM

INSTALL NEW METAL COPINGS, COUNTERFLASHINGS, ETC. WHERE SPECIFIED

LEGEND:

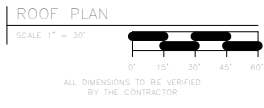
— AREAS TO BE RESTORED

X INSTALL NEW ALUMINUM LADDERS

SITE PLAN



RAYMORE-PECULIAR SCHOOL DISTRICT



CUSTOMER:
RAYMORE PECULIAR SCHOOL DISTRICT

PROJECT:
SHULL EARLY LEARNING CENTER

LOCATION:
PECULIAR, MISSOURI

APRIL 2021